



GYNECOLOGY • UROLOGY • LAPAROSCOPY • SPINE • ORTHOPAEDICS • ROBOTICS

# Patient Positioning

## Product Catalog

# About Kyra Medical



Kyra Medical is a medical manufacturer of innovative patient positioning products for the operating room. KYRA produces the next generation of lithotomy stirrups, disposables, armboards and spine positioners focused on infection control, the reduction of cross-contamination and safety for OR staff and today's modern patient.

KYRA's purple colored stirrups are recognized for their fabric-free straps and fitment for today's larger BMI patients and the elimination of pinch-points found on other products. KYRA products are designed to be repaired on-site by your Biomed department so that downtime is greatly reduced versus sending items offsite for lengthy and costly repairs.

## Order Information

### United States

Toll-free	1-888-611-KYRA (5972)
Phone	1-508-936-3550
Fax	1-617-977-KYRA (5972)
Email	customers@kyramedical.com

### Outside the US

Phone	1-508-936-3550
Fax	1-617-977-KYRA (5972)
Email	customers@kyramedical.com

Kyra Medical, 102 Otis Street, Northborough, MA 01532 USA  
kyramedical.com



# Table of Contents

## 04 Stirrups/Leg Holders

- 05 KYRA® Comfort™ Stirrups
- 06 KYRA® Clean™ Stirrups
- 07 KYRA® 400 Stirrups
- 07 KYRA® 250 Stirrups
- 08 Leg Holders

## 09 Clamps

- 09 Stirrup Clamps - Blade
- 09 Accessory Clamps - Round & Rectangular

## 10 General Accessories

- 11 Armboards & Pads
- 12 Patient Positioning
- 14 Urology
- 15 Arm Positioners
- 21 Patient Transfer Boards

## 17 Spine

- 17 KYRA® Curve™ Spine Frame
- 19 Disposables

## 20 Orthopaedics

- 20 Leg Holders
- 20 Disposables

## 22 Index

# The Purple Stirrup™

The new standard in lithotomy positioning.

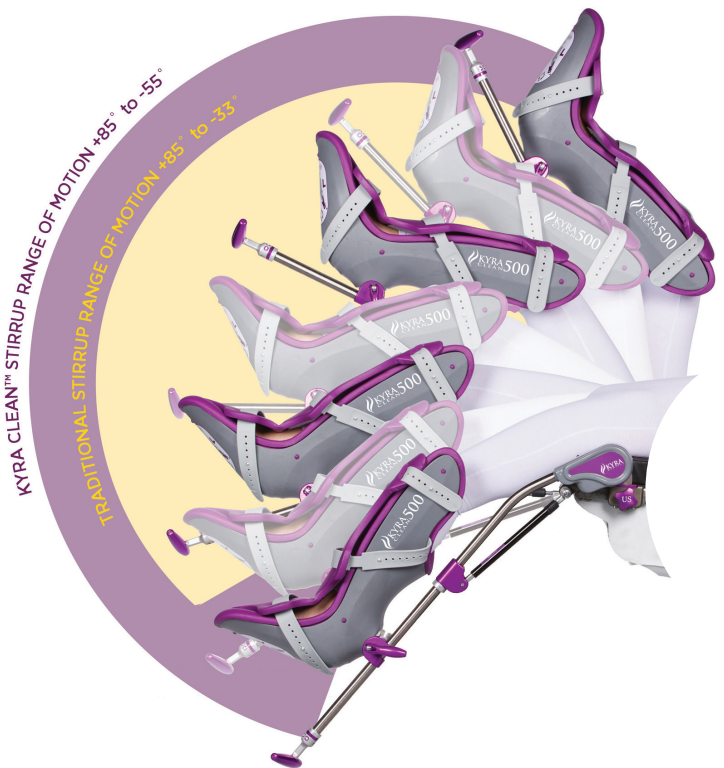


## Fabric-free straps

- ➔ Medical grade silicone straps snap-in securely
- ➔ Strong but flexible and easy to clean
- ➔ Non-tear propagating material
- ➔ Tested over 27,000 cycles

## Curved rod provides more range of motion and working space

- ➔ The unique patent-pending design provides 22° more lithotomy range of motion than traditional stirrups
- ➔ Great for robotic surgery
- ➔ Design protects the gas spring for longer life



## Larger boot and more padding for today's patients

- ➔ Fits patient's legs into the boots, not on top of the boot
- ➔ No exposed hard plastic edges
- ➔ Flexible lateral fin



# The KYRA® Comfort™ Family of Stirrups

## KYRA Comfort 350 Stirrups

KYRA3000/KYRA3100

Patient Weight Capacity: 350 lbs. (159 kg)

Stirrup Weight: 13.2 lbs. (6 kg)

WHAT'S INCLUDED



OR



KYRA3000  
Comfort 350 Stirrups  
w/hook & loop straps  
1 Pair Included

KYRA3100  
Comfort 350 Stirrups  
w/Secure-Lok™ straps  
1 Pair Included

WHAT'S REQUIRED



Choose Rail Type:

KYRA4100 (US) OR KYRA4200 (EU)

Secure-Release™ Clamp\*  
2 Required

WHAT'S OPTIONAL



KYRA1000  
Purple Stirrup Cart



## KYRA Comfort Stirrups

KYRA5000/KYRA5100

Patient Weight Capacity: 500 lbs. (227 kg)

Stirrup Weight: 14.6 lbs. (6.6 kg)

WHAT'S INCLUDED



OR



KYRA5000  
Comfort 500 Stirrups  
w/hook & loop straps  
1 Pair Included

KYRA5100  
Comfort 500 Stirrups  
w/Secure-Lok™ straps  
1 Pair Included

WHAT'S REQUIRED



Choose Rail Type:

KYRA4100 (US) OR KYRA4200 (EU)

Secure-Release™ Clamp\*  
2 Required

WHAT'S OPTIONAL



KYRA1000  
Purple Stirrup Cart



## KYRA Comfort 800 Stirrups

KYRA8100

Patient Weight Capacity: 800 lbs. (363 kg)

Stirrup Weight: 14.6 lbs. (6.6 kg)

WHAT'S INCLUDED



WHAT'S REQUIRED



Choose Rail Type:

KYRA4100 (US) OR KYRA4200 (EU)

Secure-Release™ Clamp\*  
2 Required

WHAT'S OPTIONAL



KYRA1000  
Purple Stirrup Cart



*Tired of losing clamps?  
Ask your KYRA rep about our stirrups with integrated clamps.*

\*Specify Rail Type: US, EU, UK, JP, DEN. See Page 9.

# A fabric-free stirrup to improve infection control.



## KYRA Clean™ Stirrups KYRA3200/KYRA5200

The KYRA Clean stirrup is an innovative finned stirrup designed for reducing cross contamination. A completely fabric-free design and a unique pad set that consists of a premium pressure reducing foam with an antimicrobial coating for seamless cleanability. Pad set included. Sold in pairs.

350 Patient Weight Capacity: 350 lbs. (159 kg)  
350 Stirrup Weight: 13.2 lbs. (5.9 kg)

500 Patient Weight Capacity: 500 lbs. (227 kg)  
500 Stirrup Weight: 14.4 lbs. (6.5 kg)



EASY TO CLEAN  
SEAMLESS WATERPROOF PADS



PREMIUM PRESSURE  
REDUCING FOAM



DURABLE SILICONE STRAPS

### WHAT'S INCLUDED



KYRA3200  
Clean 350 Stirrups  
w/Secure-Lok™ straps  
1 Pair Included

OR



KYRA5200  
Clean 500 Stirrups  
w/Secure-Lok™ straps  
1 Pair Included

### WHAT'S REQUIRED



Choose Rail Type:  
KYRA4100 (US) OR KYRA4200 (EU)  
Secure-Release™ Clamp\*  
2 Required

### WHAT'S OPTIONAL



KYRA1000  
Purple Stirrup Cart

\*Specify Rail Type: US, EU, UK, JP, DEN. See Page 9.

Products covered by one or more issued or pending patents including: Pat. US 11,020,303, Pat. US 10,952,914, Pat. US 10,869,801, Pat. US 11,013,652.

## KYRA 400 Stirrups

### KYRA7100

The KYRA 400 stirrup is designed for customers that prefer a non-finned boot. Classic stirrup with updates for robotic surgery. KYRA 400 stirrups can support patients up to a 400 lbs. (181 kg) weight capacity. It has a premium stainless-steel gas shock and a boot with ¾" of supportive boot padding. Easy to clean durable silicone straps. Pads included. Sold in pairs.

*Patient Weight Capacity: 400 lbs. (181 kg)*

*Stirrup Weight: 12.2 lbs. (5.5 kg)*

#### WHAT'S INCLUDED



KYRA7100  
KYRA 400 Stirrups  
w/Secure-Lok™ straps  
1 Pair Included

#### WHAT'S REQUIRED



Choose Rail Type:  
KYRA4100 (US) **OR** KYRA4200 (EU)  
Secure-Release™ Clamp\*  
2 Required

#### WHAT'S OPTIONAL



KYRA1000  
Purple Stirrup Cart



## KYRA 250 Stirrups

### KYRA7810

A junior stirrup designed for patients aged 6-12 years old but also effective in smaller/lighter adults weighing up to 250 lbs. The non-finned boot has ¾" of supportive boot padding and larger ankle well for more secure fit. Easy to clean durable silicone straps. Pads included. Sold in pairs.

*Patient Weight Capacity: 250 lbs. (113 kg)*

*Stirrup Weight: 10.2 lbs. (4.6 kg)*

#### WHAT'S INCLUDED



KYRA7810  
KYRA 250 Stirrups  
w/Secure-Lok™ straps  
1 Pair Included

#### WHAT'S REQUIRED



Choose Rail Type:  
KYRA4100 (US) **OR** KYRA4200 (EU)  
Secure-Release™ Clamp\*  
2 Required

#### WHAT'S OPTIONAL



KYRA1000  
Purple Stirrup Cart

\*Specify Rail Type: US, EU, UK, JP, DEN. See Page 9.

Products covered by one or more issued or pending patents including: Pat. US 11,020,303, Pat. US 10,952,914, Pat. US 10,869,801, Pat. US 11,013,652.



## Knee Crutch, Lift Assist

### KYRA7305

Designed with innovative gas spring, the knee crutch uses lift assist to ease lithotomy positioning. Pads included. Sold in pairs.

*Patient Weight Capacity: 500 lbs. (227 kg)*

*Device Weight: 9.6 lbs (4.6 kg)*

WHAT'S INCLUDED



KYRA7305  
Knee Crutch, Lift Assist  
1 Pair Included

WHAT'S REQUIRED



Choose Rail Type:

KYRA4100 (US) OR KYRA4200 (EU)

Secure-Release™ Clamp\*  
2 Required



## Knee Crutch, Goepel

### KYRA7300

Designed for lithotomy positioning during urology, laparoscopy, cystoscopy and gynecology procedures. Pads included. Sold in pairs.

*Patient Weight Capacity: 500 lbs. (227 kg)*

*Device Weight: 6.6 lbs. (3.0 kg)*

WHAT'S INCLUDED

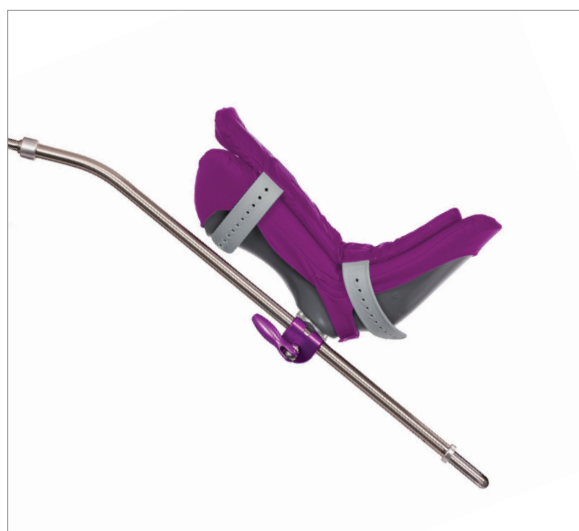


KYRA7300  
Knee Crutch, Goepel  
1 Pair Included

WHAT'S REQUIRED



KYRA4800  
Round Post Rail Clamp\*  
2 Required



## Simple Stirrups

### KYRA7860

Non-finned stirrup boot sized for today's patients, simple working mechanism. Pad included. Sold in pairs.

*Patient Weight Capacity: 600 lbs. (272 kg)*

WHAT'S INCLUDED



KYRA7860  
Simple Stirrups  
1 Pair Included

WHAT'S REQUIRED



KYRA4800  
Round Post Rail Clamp\*  
2 Required

\*Specify Rail Type: US, EU, UK, JP, DEN. See Page 9.

Products covered by one or more issued or pending patents including: Pat. US 10,952,914.



## Stirrup Clamps - Blade



### Secure-Release™ Clamp KYRA4100

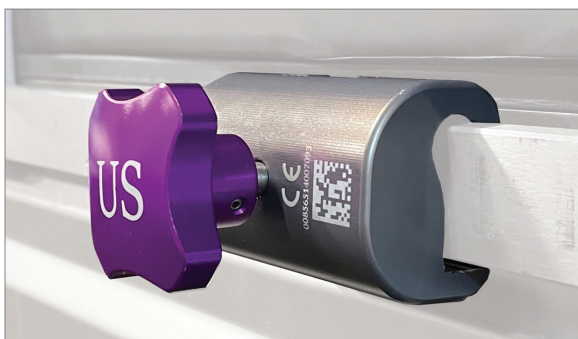
Mounts and locks anywhere on standard OR table rail. Prevents false rail engagement. Push button safely releases clamp. Autoclavable.

#### Specify Rail Type

US KYRA4100  
EU KYRA4200

UK KYRA4300  
DY KYRA4400

JP KYRA4500



### Select Blade Clamp KYRA4600

All metal design clamp mounts and locks anywhere on standard OR table rail. Snap lock to fit onto side rail at any position. Autoclavable.

#### Specify Rail Type

US KYRA4600  
EU KYRA4610

UK/JP KYRA4620



### Simple Blade Clamp KYRA4700

Mounts and locks anywhere on standard OR table rail ends or at rail notches. A cost effective solution.

#### Specify Rail Type

US KYRA4700  
DY KYRA4730

EU/UK KYRA4710  
JP KYRA4740

## Accessory Clamp - Round & Rectangular



### Round Post Clamp KYRA4800

Mounts and locks anywhere on standard OR table rail. Accepts round post up to .6875" (1.8 cm) and rectangular post 1 x .25" (2.5 cm x .6 cm). Autoclavable.

#### Specify Rail Type

US KYRA4800  
EU KYRA4810

UK KYRA4820  
DY KYRA4830

JP KYRA4840

\*Specify Rail Type: US, EU, UK, JP, DEN. See Page 9.

Products covered by one or more issued or pending patents including: Pat. US 10,952,914.



## KYRA Single™ Stirrup Boot Covers KYRA8149 (10 pack)

Infection control for your stirrups. A single-use, non sterile disposable that encapsulates the patient's foot to help prevent cross-contamination when using stirrups and can decrease room turnover time. Fits Yellow and Purple branded stirrups.

### Specify Boot Type

Yellofins® Stirrups KYRA8198

Purple Stirrups KYRA8149



Stirrups not included

## The Purple Stirrup Cart KYRA1000

Easy to push/pull with ergonomic handles. Cart keeps stirrups secured during transport to prevent damage. Clamp storage compartment. Locking casters prevent cart roll-off.

*Cart Height: 40.75" (103.5 cm)*

*Base Width: 21.625" x 21.625" (54.93 cm x 54.93 cm)*

*Cart Weight: 35.5 lbs. (16.1 kg)*



## Patient Safety Strap, Medium KYRA2601

Gel padded safety strap securely holds patients torso or legs. Attaches to side rail quickly and securely. Compatible with all surgical tables and table extensions with side rails.

*Pad center section: .5" x 5" x 18" (1.3 cm x 12.7 cm x 46 cm)*

*Straps are adjustable from 18" to 45" (45 cm to 114 cm)*

\*Specify Rail Type: US, EU, UK, JP, DEN. See Page 9.

Products covered by one or more issued or pending patents including: Pat. D 919,103.



## KYRA Trigger Armboard

Integrated clamp snap locks onto rail at any position. Designed to prevent fluid ingress. Radiolucent, ultra durable strong material. Eliminates gear grinding and pinch hazards. One-hand adjustable. Pad not included.

*Dimensions: 26" x 5.5" (66 cm x 14 cm)*

*Armboard Weight: 4.0 lbs. (1.8 kg)*

*Patient Weight Capacity: 500 lbs. (227 kg)*

### Specify Rail Type

US KYRA2000  
EU KYRA2005

UK KYRA2006  
DY KYRA2007

JP KYRA2008



## KYRA Comfort™ Armboard Pad

Traditional pads with soft pressure relieving foam. Available in various thicknesses. Fits armboards 26" x 5.5" (66 cm x 14 cm). Includes 2 Soft Armboard Straps.

*Standard Pad Weight:*

*.8 lbs. (.36 kg) for KYRA2009/2010*

*.9 lbs. (.41 kg) for KYRA2015/2016*

### Specify Pad Size

1" (2.5 cm) KYRA2009  
3" (7.6 cm) KYRA2015

2" (5 cm) KYRA2010  
4" (10 cm) KYRA2016

## Replacement, Soft Armboard Straps

KYRA8310 (12 pack)



## KYRA Clamshell Armboard Pad

Integrated clamshell strap safely encapsulates arm. Available in various thicknesses. Fits armboards 26" x 5.5" (66 cm x 14 cm).

*Clamshell Padded Area: 10" (25.4 cm)*

*Clamshell Pad Weight:*

*.95 lbs. (.43 kg) for KYRA2050/2051*

*1.0 lbs. (.45 kg) for KYRA2052/2053*

### Specify Pad Size

1" (2.5 cm) KYRA2050  
3" (7.6 cm) KYRA2052

2" (5 cm) KYRA2051  
4" (10 cm) KYRA2053



## Nissen Straps, Standard KYRA2603

Used to prevent patient slipping during Steep Reverse Trendelenburg positioning. Mounts to any standard OR rail.

*Patient Weight Capacity: 500 lbs. (227 kg)*

WHAT'S INCLUDED



KYRA2603  
Nissen Straps, Standard  
1 Pair Included

WHAT'S REQUIRED



KYRA4700  
Simple Blade Clamp\*  
2 Required



## Nissen Straps, Bariatric KYRA2602

*Patient Weight Capacity: 800 lbs. (363 kg)*

WHAT'S INCLUDED



KYRA2602  
Nissen Straps, Bariatric  
1 Pair Included

WHAT'S REQUIRED



KYRA4700  
Simple Blade Clamp\*  
4 Required



## Secondary Shoulder Supports KYRA2340

Designed to provide non-contact support for extreme Trendelenburg positioning. Flexible swivel adjustment for optimal positioning. Pads included. Sold in pairs.

*Patient Weight Capacity: 600 lbs. (272 kg)*

WHAT'S INCLUDED



KYRA2340  
Shoulder Supports  
1 Pair Included

WHAT'S REQUIRED



KYRA4800  
Round Post Rail Clamp\*  
2 Required

\*Specify Rail Type: US, EU, UK, JP, DEN. See Page 9.  
Products covered by one or more issued or pending patents.





RECTANGULAR LATERAL POSITIONER



CIRCULAR LATERAL POSITIONER

## Lateral Positioning Set

### KYRA9100K

Secure and comfortable positioning for procedures requiring total lateral stability. Fully adjustable to any angle. Swivel heads conform to anatomical contours of patient and can be securely locked for precise positioning. No disposable needed. The 3-piece set includes 2 Rectangular and 1 Circular Positioners.

*Patient Weight Capacity: 600 lbs. (272 kg)*

#### WHAT'S INCLUDED



KYRA9120  
Lateral Positioner,  
Rectangular  
2 Included

KYRA9110  
Lateral Positioner,  
Circular  
1 Included

#### WHAT'S REQUIRED



KYRA4800  
Round Post Rail Clamp\*  
3 Required

\*Specify Rail Type: US, EU, UK, JP, DEN. See Page 9.  
Products covered by one or more issued or pending patents.



## Uro Drain Bags

KYRA8410 Non-sterile (10/box)

KYRA8411 Sterile (10/box)

Disposable surgical fluid drainage bag with a large catch basin and integrated buttocks flap. Works with KYRA Attachment Band.



## Urology Attachment Band, US Kit

KYRA8400-K

Flexible band used to support Urology Drainage Bags, reusable. Includes 2 KYRA4700 clamps for US rail.

Dimensions: 45" x 1" x .25" (114 cm x 2.54 cm x .64 cm)

WHAT'S INCLUDED



KYRA8400  
Urology Attachment Band  
1 Included

+



KYRA4700  
Simple Blade Clamp  
2 Included for US Rail



## Urology Attachment Band, EU Kit

KYRA8401-K

Flexible band used to support Urology Drainage Bags, reusable. Includes 2 KYRA4710 clamps for EU rail.

Dimensions: 45" x 1" x .25" (114 cm x 2.54 cm x .64 cm)

WHAT'S INCLUDED



KYRA8400  
Urology Attachment Band  
1 Included

+



KYRA4710  
Simple Blade Clamp  
2 Included for EU Rail



## KYRA Armboard, Swivel, Large KYRA2300

Allows for multi-task positioning of the arms to help prevent potential patient injury. Typical use case for lateral decubitus and prone positions. Pad included.

*Armboard Weight: 6.1 lbs. (2.8 kg)*

*Armboard Post Size: 18.2" x 12.5" x 5/8" (46.2 cm x 31.7 cm x 1.6 cm)*

WHAT'S INCLUDED



KYRA2300  
Armboard, Swivel  
1 Included

WHAT'S REQUIRED



KYRA4800  
Round Post Rail Clamp\*  
1 Required



## KYRA Armboard, Swivel, Small KYRA2304

Allows for effective positioning of the arms to help prevent potential patient injury. Typical use case for lateral decubitus and prone positions. Pad included.

*Armboard Weight: 6.0 lbs. (2.7 kg)*

*Armboard Post Size: 16" x 6.5" x 5/8" (40.6 cm x 16.5 cm x 1.6 cm)*

WHAT'S INCLUDED



KYRA2304  
Armboard, Swivel  
1 Included

WHAT'S REQUIRED



KYRA4800  
Round Post Rail Clamp\*  
1 Required



## Side Rail Extender KYRA2305 - (US Rail) KYRA2306 - (EU Rail)

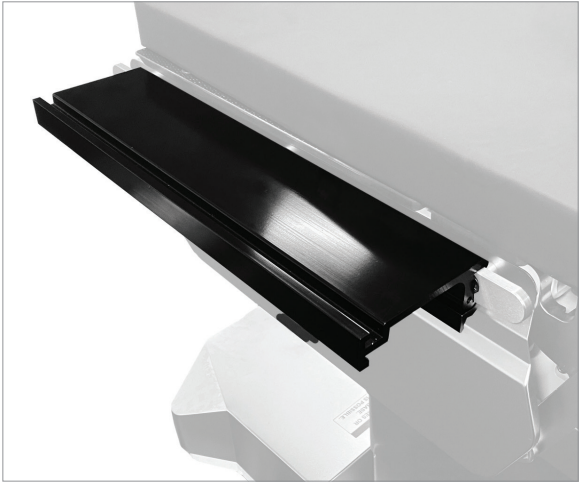
Extend a table rail by: 6" (15.2 cm)

Clamp included. Sold individually.

*Dimensions: 8" x 3" x 3" (20 cm x 7.6 cm x 7.6 cm)*

*Patient Weight Capacity: 800 lbs. (363 kg)*

\*Specify Rail Type: US, EU, UK, JP, DEN. See Page 9.  
Products covered by one or more issued or pending patents.



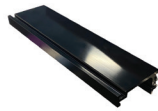
## Table Width Extender

KYRA2320

Securely extend the width of OR table by 4"x 20" (10 cm x 50.8 cm), w/side rail. Pad included. US rail only.

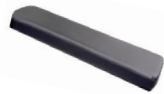
*Patient Weight Capacity: 800 lbs. (363 kg)*

WHAT'S INCLUDED



KYRA2320  
Table Width Extender  
1 Included

+



KYRA2321  
Table Width Extender Pad 2" (5 cm)  
1 Included



## Arm Protection Shield

KYRA2330

Safely support patients arms, low profile.  
Pad included.

*Dimensions: 11" x 16" x .9" (28 cm x 40 cm x 23 cm)*



## Flexible Anesthesia Screen

KYRA2501

Coated gooseneck band to create space for anesthesia around patient's head area.

*Dimensions: 60" (152 cm)*

WHAT'S INCLUDED



KYRA2501  
Flexible Anesthesia Screen  
1 Included

WHAT'S REQUIRED



KYRA4800  
Round Post Rail Clamp\*  
2 Required

\*Specify Rail Type: US, EU, UK, JP, DEN. See Page 9.

# KYRA® Spine

## Radiolucent. Fabric Free Straps. 600 lbs. Capacity.



- INTEGRATED GEL PADS
- ALLOWS FOR MORE ABDOMEN SPACE



- DURABLE SILICONE STRAPS
- HOOK & LOOP FREE

### KYRA Curve™ Spine Frame System

#### KYRA9000K

Provides a stable platform for spine surgeries including laminectomies, decompressions and disc surgery. Intraoperatively adjustable to the desired height to get optimal surgical site exposure. C-arm compatible. Fits spine table rails and tabletops. Unique silicone straps provides better cleaning vs. hook & loop straps. Pad set included.

*Patient Weight Capacity: 600 lbs. (272 kg)*

*Device Weight: 24.4 lbs. (11 kg)*

WHAT'S INCLUDED



KYRA9000  
Curve Spine Frame  
1 Included

+



KYRA9010  
Curve Crank Handle  
1 Included

+



KYRA1100  
Curve Spine Frame Cart  
1 Included

+



KYRA9030  
Secure-Lok™ Strap Connector  
For use with tables without  
side rails. 2 Included

WHAT'S OPTIONAL



KYRA9020  
Curve Spine Frame  
Comfort Covers Set

Products covered by one or more issued or pending patents.





## KYRA Curve Comfort Cover Set

### KYRA9020 (6 pack)

Disposable pack for use with Curve Spine Frame. Includes cosmetic foam pad covers, head block, lateral rod pad and arm cushions.



## KYRA Curve Standard Cover Set

### KYRA9021 (6 pack)

Disposable pack for use with Curve Spine Frame. Includes standard foam pad covers, head block, lateral rod pad and arm cushions.



## KYRA Foam Head Block

### KYRA9022 (6 pack)

Provides support, stability, elevation and safe alignment of the head and neck.



## KYRA Curve Spine Frame Replacement Pads

### KYRA6450-P

Pair of replacement pads for the Curve Spine Frame.  
No special tools necessary to remove or attach the pads.



## KYRA Curve Crank Handle

### KYRA9010

Rotational handle for the Curve Spine Frame to create lordosis.  
Machined marked and windowed to help ensure positive connection with the Curve Spine Frame.



## KYRA Curve Spine Strap Connector

### KYRA9030

Unique tool to secure Curve Spine Frame to tables without side rails.  
Sold in pairs.



## KYRA Curve Spine Frame Cart

### KYRA1100

Easy to push/pull with ergonomic handles. Cart keeps Curve Spine Frame secured during transport to prevent damage. Locking casters.

*Cart Height: 40.75" (103.5 cm)*

*Base Width: 21.625" x 21.625" (54.93 cm x 54.93 cm)*

*Cart Weight: 35.5 lbs. (16.1 kg)*



## Arthroscopic Leg Holder KYRA9200

Arthroscopic leg holder with antimicrobial pads designed for proper patient positioning for knee surgery. Holds leg up to 35" (89 cm) in circumference.

WHAT'S INCLUDED



KYRA9200  
Arthroscopic Leg Holder  
1 Included

WHAT'S REQUIRED



KYRA4800  
Round Post Rail Clamp\*  
1 Required

+



KYRA8501  
Disposable Pad  
1 Required



## Disposable Pad for Arthroscopic Leg Holder KYRA8501 (12 pack)

Non-sterile disposable to protect the skin. For use with the Arthroscopic Leg Holder.



## Well Leg Holder KYRA9205

KYRA stirrup boot supports and securely articulates non-operative leg out of working space. Easy to set up and position. Universal design fits left or right leg. Pad included.

*Patient Weight Capacity: 600 lbs. (272 kg)*

*Device Weight: 6.9 lbs. (3.1 kg)*

WHAT'S INCLUDED



KYRA9205  
Well Leg Holder  
1 Included

WHAT'S REQUIRED



KYRA4800  
Round Post Rail Clamp\*  
1 Required

\*Specify Rail Type: US, EU, UK, JP, DEN. See Page 9.



## Patient Transfer Boards

Patient Transfer Boards are designed to assist hospital staff with moving patients from one location to another. 3 sizes available. Not available in CE countries.

- Roller Free
- Anti-static
- Anti-bacterial
- Anti-fungal
- Latex free
- Flame retardant
- No metal for MRI use



Long Wide Board  
KYRA2401

Board Size: 48" x 20" (120 cm x 50 cm)  
Board Weight: 3.3 lbs. (1.5 kg)



Short Narrow Board  
KYRA2403

Board Size: 40" x 16" (100 cm x 40 cm)  
Board Weight: 2.7 lbs. (1.3 kg)



Short Wide Board  
KYRA2404

Board Size: 40" x 20" (100 cm x 50 cm)  
Board Weight: 3.3 lbs. (1.5 kg)

# Index

## Armboards

KYRA Trigger Armboard	11
Armboard, Swivel, Large	15
Armboard, Swivel, Small	15
Comfort Armboard Pad	11
Clamshell Armboard Pad	11

## Clamps

Secure-Release Clamp	09
Select Blade Clamp	09
Simple Blade Clamp	09
Round Post Rail Clamp	09

## Patient Transfer

Premium Transfer Board, Long Wide	21
Premium Transfer Board, Short Wide	21
Premium Transfer Board, Short Narrow	21

## Table Accessories

Anesthesia Screen, Flexible	16
Arm Protection Shield	16
Lateral Positioning Set	13
Lateral Positioner, Rectangle	13
Lateral Positioner, Circular	13
Nissen Straps, Bariatric	12
Nissen Straps, Standard	12
Patient Safety Strap, Medium	10
Secondary Shoulder Supports	12
Side Rail Extender	15
Table Width Extender	16

## Orthopaedic

Well Leg Holder	20
Arthroscopic Leg Holder	20
Disposable Pad for Arthro Leg Holder	20

## Spine

KYRA Curve Spine Frame	17
KYRA Crank Handle	19
KYRA Curve Spine Frame Cart	19
Replacement Pads, KYRA Curve Spine	19
KYRA Curve Comfort Covers, Disposable	18
KYRA Curve Standard Covers, Disposable	18
KYRA Foam Head Block, Disposable	18

## Urology

Urology Attachment Band, US	14
Urology Attachment Band, EU	14
Uro Drain Bags (10/box)	14

## Stirrups/Leg Holders

KYRA Comfort Stirrups	05
KYRA Clean Stirrups	06
KYRA 400 Stirrup	07
KYRA 250 Stirrup	07
Knee Crutches, Goepel	08
Simple Stirrups	08
Knee Crutch, Lift Assist	08
Stirrup Cart	10

# Increase Your Uptime with Kyra Medical Onsite Repair Kits

*90% of stirrup repair can be done at your hospital with easy to use repair kits.*



## Onsite Repair Kits Reduce Maintenance Costs

Kyra Medical provides reasonably priced repair kits that allows you to make onsite stirrup repairs 90% of the time.



## Low-Cost No-Hassle Training

Kyra Medical provides online training that will certify your biomedical/facility teams at no cost to your facility.



## No Repair Cost Surprises

Kyra Medical publishes price lists for ALL anticipated stirrup repairs. You know **EXACTLY** what you will pay for any repair.



## Reduce Costly Equipment Downtime

Only Kyra Medical allows your biomedical team to make most repairs on site; reducing costly equipment down time.

## Contact Us Today

508-936-3550 | 888-611-KYRA(5972)

## *Kyra Medical Warranty*

*All KYRA Products are covered by a 2 (two) year warranty except for pads which carry a (1) one year warranty.*

KYRA products may be covered by one or more issued or pending patents.



GYNECOLOGY • UROLOGY • LAPAROSCOPY • SPINE • ORTHOPAEDICS • ROBOTICS



from the creators of the purple stirrup™

Kyra Medical, 102 Otis Street, Northborough, MA 01532 USA  
[kyramedical.com](http://kyramedical.com)

©2023 Kyra Medical, Inc. All Rights Reserved. KYRA0010-A10-1